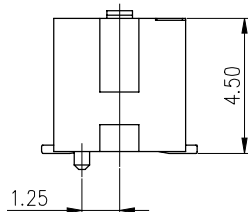
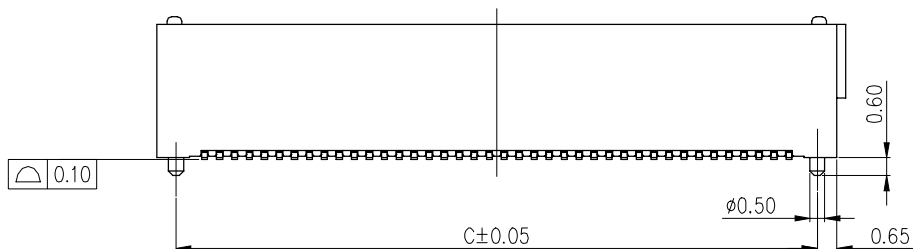


NOTES:

1. MATERIAL:
 - 1.1 HOUSING: THERMOPLASTIC, HIGH TEMP., UL94V-0; COLOR: BLACK.
 - 1.2 TERMINAL: COPPER ALLOY
2. FINISH:
 - 2.1 TERMINAL: UNDERPLATING: 50u"MIN NICKEL OVERALL.
 - 1: G/F ON CONTACT AREA
 - MATTE TIN ON SOLDER AREA
3. REFLOW SOLDER CAPABLE TO 260°C PER ACES SPEC.
4. SPEC. PLS. REFER TO PS-52006-XXXXX-XXX
5. PART NUMBER

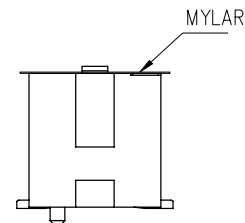
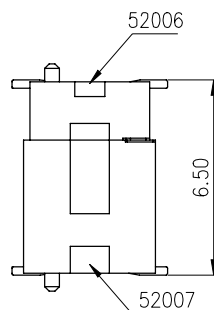
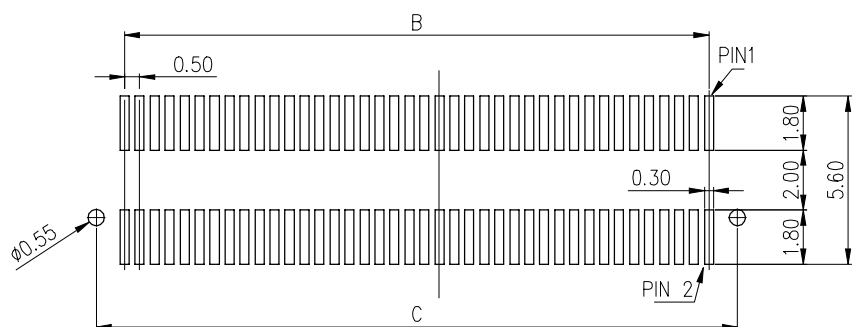


52007 - XXX X X - XXX

CKT ————
 PACKING ————
 4:TAPE & REEL WITH MYLAR

XXX	Housing Color	PACKAGE
001	BLACK	52007-xxxxx-xx-TRP

PLATING
 1: GOLD FLASH



CKT	A	B	C	D
80	22.70	19.50	21.40	20.55
100	27.70	24.50	26.40	25.55

PCB LAYOUT
 GENERAL TOLORANCE ±0.05

QUALITY SYMBOLS MAJOR Ⓢ CRITICAL Ⓢ	DRAWN BY Rong, Li Ping	DATE 20/06/15		
	CHECKED BY Lu, jing quan	DATE 20/06/15		
GENERAL TOLERANCES (UNLESS SPECIFIED) X ±0.5 .X ±0.25 .XX ±0.15 .XXX ±0.1 ANGLES ±2°	APPROVED BY hsieh,fu yu	DATE 20/06/15	TITLE 0.5 PITCH BTB CONN. SMT D/R S/T TYPE	
	UNITS mm		SIZE A4	RFG NO. N/A
SCALE 1:1	SHEET NO. 1 OF 1	REV A	DWG NO. 52007-XXXXX-XXX	